

Royal Oak Dr between Pat Bay Hwy and Elk Lake Dr

October 28, 2019 To November 01, 2019



The data presented here is for information purposes only and should not be considered authoritative for construction, geotechnical, engineering, navigational, legal, or other site-specific uses. The information shared is owned by the Transportation Division of the Engineering Department at the District of Saanich. Accuracy is not guaranteed.

Start Date: 28-Oct-19
 Start Time: 0:00
 Station ID: M0030-07

Location 1: Royal Oak Dr between Pat Bay Hwy and Elk Lake Dr

Note: Eastbound data bad after Oct 29 @ 12:30.

DATE:	October 28, 2019		October 29, 2019		October 30, 2019		October 31, 2019		November 1, 2019		WK AVG		WK AVG	HOURLY
	MON		TUE		WED		THURS		FRI		EB	WB	CH 1+2	%
Time:	EB	WB	EB	WB	EB	WB	EB	WB	EB	WB	EB	WB		
12-1 AM	36	44	27	41		51		44			32	45	77	0.3%
1-2 AM	21	14	14	16		15		11			18	14	32	0.1%
2-3 AM	10	5	21	9		9		7			16	8	23	0.1%
3-4 AM	40	12	26	20		13		13			33	15	48	0.2%
4-5 AM	55	28	67	33		41		34			61	34	95	0.4%
5-6 AM	171	111	184	128		121		124			178	121	299	1.2%
6-7 AM	495	292	517	278		291		271			506	283	789	3.2%
7-8 AM	817	614	799	688		675		677			808	664	1472	5.9%
8-9 AM	878	867	948	901		947		898			913	903	1816	7.3%
9-10 AM	841	731	900	759		858		735			871	771	1641	6.6%
10-11 AM	824	731	936	782		805		829			880	787	1667	6.7%
11-12 PM	929	755	968	830		842		860			949	822	1770	7.1%
12-1 PM	894	827	455	870		866		900			675	866	1540	6.2%
1-2 PM	884	827		857		858		808			884	838	1722	6.9%
2-3 PM	909	788		883		813		819			909	826	1735	6.9%
3-4 PM	1036	985		957		1020		1008			1036	993	2029	8.1%
4-5 PM	998	1102		1044		1071		1018			998	1059	2057	8.2%
5-6 PM	945	972		1034		958		907			945	968	1913	7.6%
6-7 PM	711	682		731		722		557			711	673	1384	5.5%
7-8 PM	563	572		520		582		424			563	525	1088	4.3%
8-9 PM	391	362		393		454		425			391	409	800	3.2%
9-10 PM	282	247		281		317		308			282	288	570	2.3%
10-11 PM	137	136		158		154		179			137	157	294	1.2%
11-12 AM	65	82		96		83		120			65	95	160	0.6%
LANES	12932	11786		12309		12566		11976			12858	12159	25017	100.0%
TOTAL	24718										25020			
	MON		TUE		WED		THURS		FRI		WK AVG			

PEAK HOUR					TOTAL VEHICALS-PEAK PERIODS		2 HOUR PEAK INTERVALS						
MAX. 7 - 9 am PEAK HOUR	1816	⇒	7.3%	between 8-9 AM	10568	⇒	6 HR TOTAL	2 HR AM (7 - 9 AM)					
MAX. 7 - 11 am PEAK HOUR	1816	⇒	7.3%	between 8-9 AM	7257	⇒	4 HR TOTAL	VEH / HR	VEH / 2HR	2 HR %			
								7-8 AM	1472	3288	13.1%		
								8-9 AM	1816				
MAX. 11 am - 1 pm PEAK HOUR	1770	⇒	7.1%	between 11-12 PM			24 HOUR FACTORS	2 HR NOON (11 - 1 PM)					
MAX. 11 am - 3 pm PEAK HOUR	1770	⇒	7.1%	between 11-12 PM				VEH / HR	VEH / 2HR	2 HR %			
								11-12 PM	1770	3311	13.2%		
MAX. 4 - 6 pm PEAK HOUR	2057	⇒	8.2%	between 4-5 PM	2.37	⇒	6-24 HR FACT.	12-1 PM	1540				
MAX. 3 - 6 pm PEAK HOUR	2057	⇒	8.2%	between 4-5 PM	3.45	⇒	4-24 HR FACT.	2 HR PM (4 - 6 PM)					
								VEH / HR	VEH / 2HR	2 HR %			
								4-5 PM	2057	3970	15.9%		
								5-6 PM	1913				

Royal Oak Dr between Pat Bay Hwy and Elk Lake Dr

Westbound

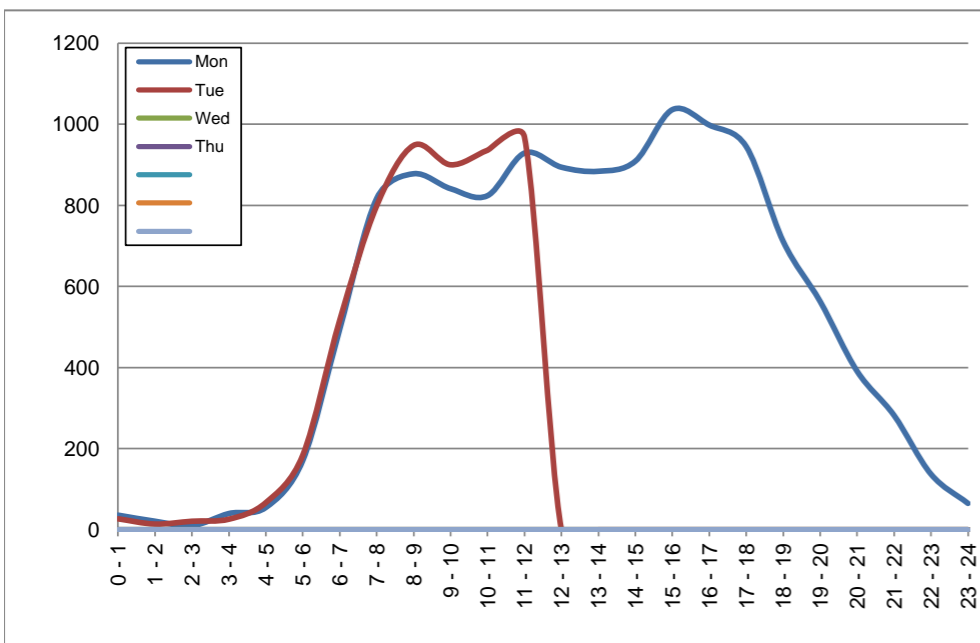
October 28, 2019 to October 31, 2019

Hourly Volumes

Time Period	Mon	Tue	Wed	Thu			
	Oct 28	Oct 29	Oct 30	Oct 31			
0 - 1	36	27					
1 - 2	21	14					
2 - 3	10	21					
3 - 4	40	26					
4 - 5	55	67					
5 - 6	171	184					
6 - 7	495	517					
7 - 8	817	799					
8 - 9	878	948					
9 - 10	841	900					
10 - 11	824	936					
11 - 12	929	968					
12 - 13	894						
13 - 14	884						
14 - 15	909						
15 - 16	1036						
16 - 17	998						
17 - 18	945						
18 - 19	711						
19 - 20	563						
20 - 21	391						
21 - 22	282						
22 - 23	137						
23 - 24	65						
Day Total	12932						

15-Minute Volumes

Time Start	Mon	Tue	Wed	Thu				Time Start	Mon	Tue	Wed	Thu			
	Oct 28	Oct 29	Oct 30	Oct 31					Oct 28	Oct 29	Oct 30	Oct 31			
0:00	13	13						12:00	212	216					
0:15	8	5						12:15	216	239					
0:30	9	4						12:30	250						
0:45	6	5						12:45	216						
1:00	10	5						13:00	219						
1:15	2	4						13:15	232						
1:30	5	2						13:30	230						
1:45	4	3						13:45	203						
2:00	4	4						14:00	214						
2:15	2	6						14:15	223						
2:30	1	3						14:30	213						
2:45	3	8						14:45	259						
3:00	10	5						15:00	250						
3:15	6	5						15:15	241						
3:30	12	9						15:30	269						
3:45	12	7						15:45	276						
4:00	11	12						16:00	268						
4:15	7	11						16:15	252						
4:30	24	25						16:30	233						
4:45	13	19						16:45	245						
5:00	27	27						17:00	243						
5:15	28	35						17:15	250						
5:30	43	55						17:30	245						
5:45	73	67						17:45	207						
6:00	81	89						18:00	189						
6:15	94	112						18:15	174						
6:30	158	158						18:30	163						
6:45	162	158						18:45	185						
7:00	154	163						19:00	142						
7:15	179	199						19:15	158						
7:30	254	203						19:30	120						
7:45	230	234						19:45	143						
8:00	218	250						20:00	102						
8:15	226	234						20:15	93						
8:30	236	255						20:30	106						
8:45	198	209						20:45	90						
9:00	192	210						21:00	84						
9:15	252	228						21:15	77						
9:30	190	209						21:30	73						
9:45	207	253						21:45	48						
10:00	195	254						22:00	48						
10:15	209	228						22:15	38						
10:30	204	218						22:30	30						
10:45	216	236						22:45	21						
11:00	220	233						23:00	23						
11:15	243	242						23:15	18						
11:30	221	253						23:30	11						
11:45	245	240						23:45	13						



Site notes: Eastbound data bad after Oct 29 @ 12:30.

Royal Oak Dr between Pat Bay Hwy and Elk Lake Dr

Eastbound

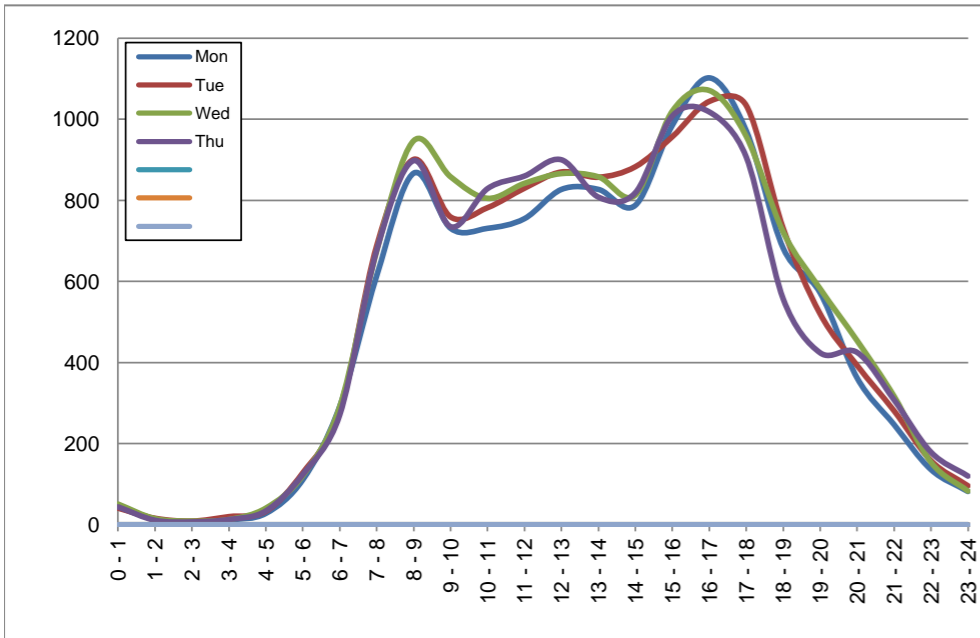
October 28, 2019 to October 31, 2019

Hourly Volumes

Time Period	Mon	Tue	Wed	Thu			
	Oct 28	Oct 29	Oct 30	Oct 31			
0 - 1	44	41	51	44			
1 - 2	14	16	15	11			
2 - 3	5	9	9	7			
3 - 4	12	20	13	13			
4 - 5	28	33	41	34			
5 - 6	111	128	121	124			
6 - 7	292	278	291	271			
7 - 8	614	688	675	677			
8 - 9	867	901	947	898			
9 - 10	731	759	858	735			
10 - 11	731	782	805	829			
11 - 12	755	830	842	860			
12 - 13	827	870	866	900			
13 - 14	827	857	858	808			
14 - 15	788	883	813	819			
15 - 16	985	957	1020	1008			
16 - 17	1102	1044	1071	1018			
17 - 18	972	1034	958	907			
18 - 19	682	731	722	557			
19 - 20	572	520	582	424			
20 - 21	362	393	454	425			
21 - 22	247	281	317	308			
22 - 23	136	158	154	179			
23 - 24	82	96	83	120			
Day Total	11786	12309	12566	11976			

15-Minute Volumes

Time Start	Mon	Tue	Wed	Thu				Time Start	Mon	Tue	Wed	Thu			
	Oct 28	Oct 29	Oct 30	Oct 31					Oct 28	Oct 29	Oct 30	Oct 31			
0:00	12	8	18	9				12:00	256	190	230	231			
0:15	11	19	7	13				12:15	197	244	220	234			
0:30	10	8	19	16				12:30	180	216	196	194			
0:45	11	6	7	6				12:45	194	220	220	241			
1:00	7	9	4	5				13:00	206	212	223	212			
1:15	3	2	7	5				13:15	196	209	225	199			
1:30	3	3	2	0				13:30	227	225	191	209			
1:45	1	2	2	1				13:45	198	211	219	188			
2:00	1	5	1	1				14:00	195	209	197	195			
2:15	1	0	4	3				14:15	196	214	203	226			
2:30	1	2	3	1				14:30	194	235	189	190			
2:45	2	2	1	2				14:45	203	225	224	208			
3:00	4	3	3	3				15:00	233	216	228	255			
3:15	3	6	4	5				15:15	246	239	256	257			
3:30	2	5	3	2				15:30	248	244	261	230			
3:45	3	6	3	3				15:45	258	258	275	266			
4:00	4	4	6	9				16:00	257	248	272	234			
4:15	3	5	11	7				16:15	283	280	274	264			
4:30	8	8	9	8				16:30	277	263	273	254			
4:45	13	16	15	10				16:45	285	253	252	266			
5:00	22	27	24	28				17:00	256	251	236	242			
5:15	33	33	28	25				17:15	251	276	269	225			
5:30	30	29	25	40				17:30	219	253	207	226			
5:45	26	39	44	31				17:45	246	254	246	214			
6:00	39	34	35	34				18:00	192	176	208	166			
6:15	55	54	60	66				18:15	164	191	195	144			
6:30	86	77	76	73				18:30	149	177	168	121			
6:45	112	113	120	98				18:45	177	187	151	126			
7:00	123	128	144	103				19:00	164	176	193	137			
7:15	146	152	131	150				19:15	167	142	162	110			
7:30	149	186	176	203				19:30	127	95	120	88			
7:45	196	222	224	221				19:45	114	107	107	89			
8:00	192	236	227	233				20:00	109	115	134	85			
8:15	210	240	261	174				20:15	102	102	126	112			
8:30	213	210	208	233				20:30	65	76	98	109			
8:45	252	215	251	258				20:45	86	100	96	119			
9:00	215	183	247	196				21:00	82	94	90	94			
9:15	185	207	206	189				21:15	66	63	82	85			
9:30	168	177	191	159				21:30	51	49	76	67			
9:45	163	192	214	191				21:45	48	75	69	62			
10:00	187	213	196	197				22:00	38	43	45	44			
10:15	172	202	181	180				22:15	31	44	33	36			
10:30	183	185	227	228				22:30	30	35	33	52			
10:45	189	182	201	224				22:45	37	36	43	47			
11:00	180	200	193	210				23:00	32	46	30	44			
11:15	191	213	210	226				23:15	24	19	19	30			
11:30	184	218	225	197				23:30	19	19	13	23			
11:45	200	199	214	227				23:45	7	12	21	23			



Site notes: Eastbound data bad after Oct 29 @ 12:30.

Vehicle Speed Summary

Saanich Engineering Department

Count Id: [M0030-07](#)

Filename: [Royal Oak Dr between Pat Bay Hwy and Elk Lake Dr-Oct-2019-Part2.xlsm](#)

Location: Royal Oak Dr between Pat Bay Hwy and Elk Lake Dr

Note: Eastbound data bad after Oct 29 @ 12:30.

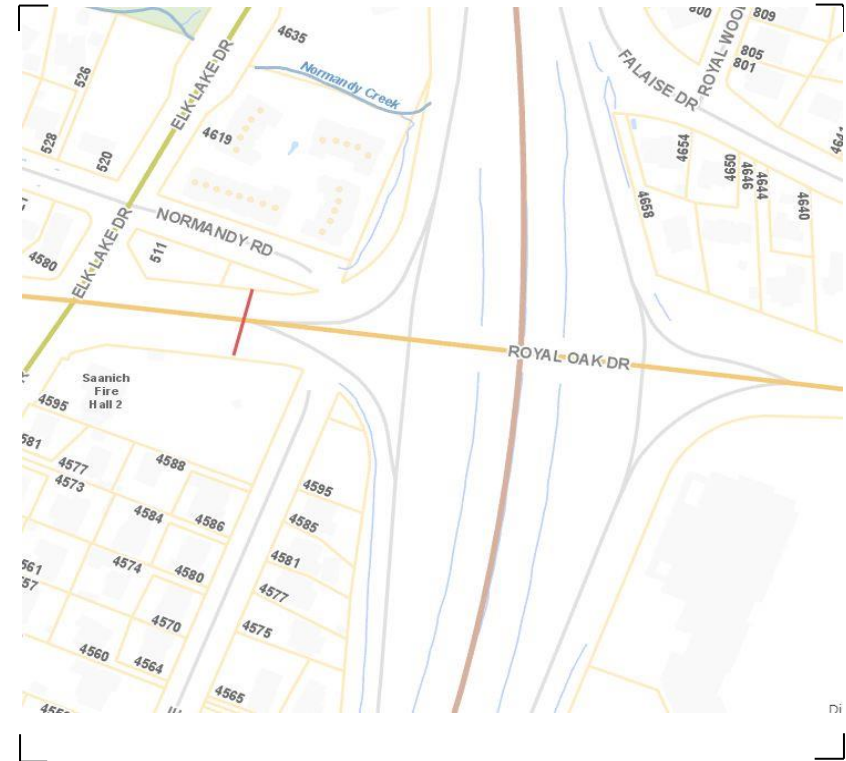
Direction: **East-West**

Dates: **October 28, 2019 To November 01, 2019**

Filtered data

AVG. SPEED	25 mph	40 km/h
50 % SPEED	25 mph	41 km/h
85 % SPEED	30 mph	48 km/h
95 % SPEED	33 mph	54 km/h

Location Map



Royal Oak Dr between Pat Bay Hwy and Elk Lake Dr

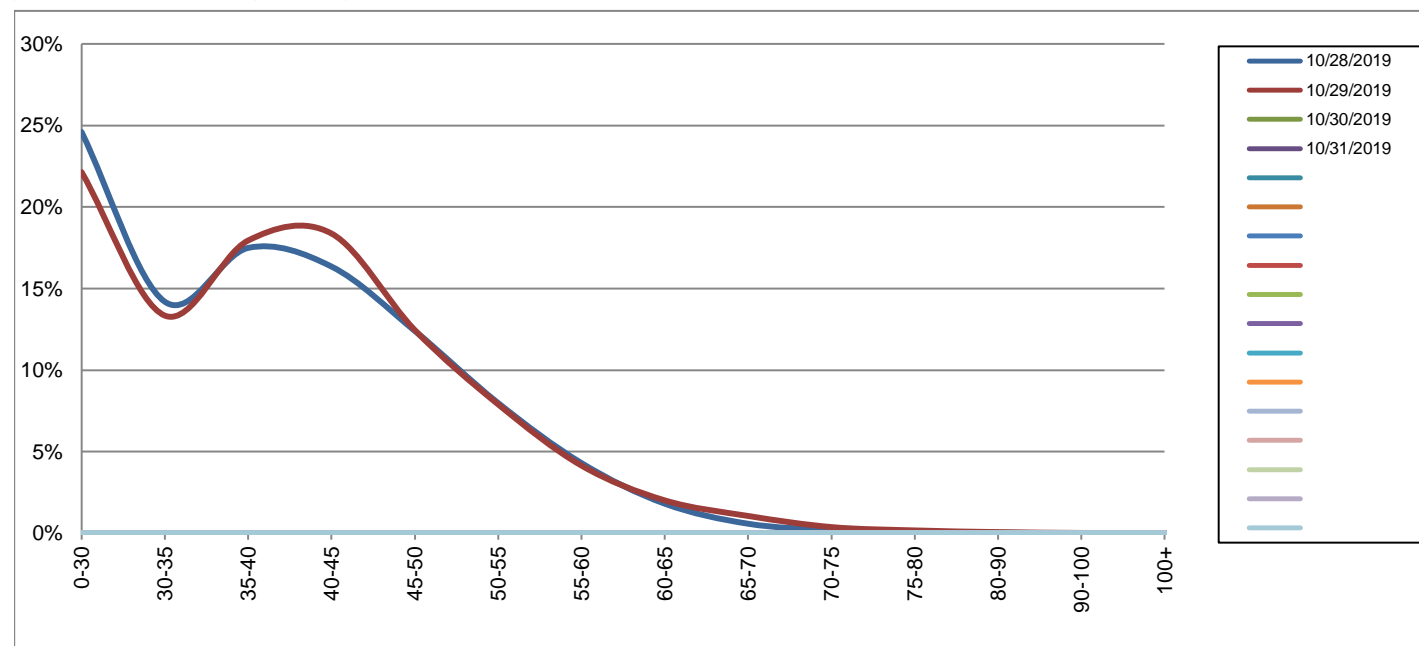
Westbound

October 28, 2019 to October 31, 2019

Daily Speed Bin Percentages															Daily Speed Bin Volumes														Total	Avg.
Bin #	1	2	3	4	5	6	7	8	9	10	11	12	13	14	1	2	3	4	5	6	7	8	9	10	11	12	13	14	Volume	Speed
Bin Speeds	0-30	30-35	35-40	40-45	45-50	50-55	55-60	60-65	65-70	70-75	75-80	80-90	90-100	100+	0-30	30-35	35-40	40-45	45-50	50-55	55-60	60-65	65-70	70-75	75-80	80-90	90-100	100+		
10/28/2019	24.6%	14.2%	17.5%	16.3%	12.4%	8.0%	4.3%	1.8%	0.6%	0.2%	0.1%	0.0%	0.0%	0.0%	3181	1835	2262	2114	1604	1032	556	234	75	25	10	4	0	0	12932	36
10/29/2019	22.1%	13.3%	17.9%	18.4%	12.5%	7.9%	4.1%	2.0%	1.1%	0.4%	0.2%	0.1%	0.0%	0.0%	1298	782	1052	1077	730	463	243	118	62	22	10	4	1	0	5862	37
10/30/2019															0	0	0	0	0	0	0	0	0	0	0	0	0	0		
10/31/2019															0	0	0	0	0	0	0	0	0	0	0	0	0	0		
Total	23.8%	13.9%	17.6%	17.0%	12.4%	8.0%	4.3%	1.9%	0.7%	0.3%	0.1%	0.0%	0.0%	0.0%	4479	2617	3314	3191	2334	1495	799	352	137	47	20	8	1	0	18794	36

Speed Data Summary

Bin #	1	2	3	4	5	6	7	8	9	10	11	12	13	14	Total
Bin Speeds	0-30	30-35	35-40	40-45	45-50	50-55	55-60	60-65	65-70	70-75	75-80	80-90	90-100	100+	
Survey Total	4479	2617	3314	3191	2334	1495	799	352	137	47	20	8	1	0	18794
% Total	23.8%	13.9%	17.6%	17.0%	12.4%	8.0%	4.3%	1.9%	0.7%	0.3%	0.1%	0.0%	0.0%	0.0%	100%
Accumulated %	23.8%	37.8%	55.4%	72.4%	84.8%	92.7%	97.0%	98.9%	99.6%	99.8%	100.0%	100.0%	100.0%	100%	
Inverse Accum. %	76.2%	62.2%	44.6%	27.6%	15.2%	7.3%	3.0%	1.1%	0.4%	0.2%	0.0%	0.0%	0.0%	0.0%	
Average Speed	36 KM/H														



Site notes: Eastbound data bad after Oct 29 @ 12:30.

Royal Oak Dr between Pat Bay Hwy and Elk Lake Dr

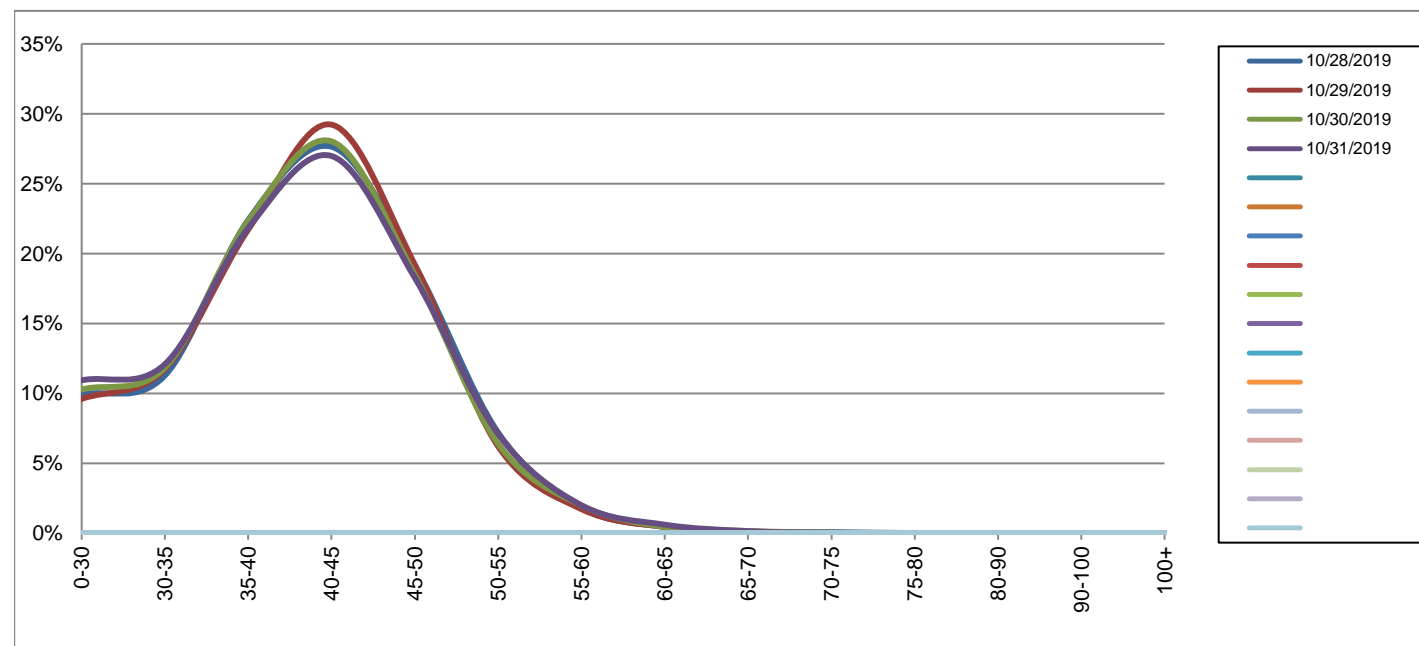
Eastbound

October 28, 2019 to October 31, 2019

Daily Speed Bin Percentages															Daily Speed Bin Volumes														Total	Avg.
Bin #	1	2	3	4	5	6	7	8	9	10	11	12	13	14	1	2	3	4	5	6	7	8	9	10	11	12	13	14	Total	Avg.
Bin Speeds	0-30	30-35	35-40	40-45	45-50	50-55	55-60	60-65	65-70	70-75	75-80	80-90	90-100	100+	0-30	30-35	35-40	40-45	45-50	50-55	55-60	60-65	65-70	70-75	75-80	80-90	90-100	100+	Volume	Speed
10/28/2019	9.9%	11.3%	22.4%	27.6%	19.1%	7.2%	1.8%	0.4%	0.1%	0.1%	0.0%	0.0%	0.0%	0.0%	1167	1329	2640	3258	2253	848	215	53	12	9	1	1	0	0	11786	40
10/29/2019	9.6%	11.7%	21.7%	29.2%	19.2%	6.2%	1.7%	0.4%	0.1%	0.0%	0.0%	0.0%	0.0%	0.0%	1182	1444	2673	3597	2365	765	212	55	12	3	1	0	0	0	12309	40
10/30/2019	10.3%	11.8%	22.3%	28.0%	18.5%	6.4%	2.0%	0.5%	0.2%	0.0%	0.0%	0.0%	0.0%	0.0%	1291	1487	2806	3522	2324	805	250	57	20	4	0	0	0	0	12566	39
10/31/2019	10.9%	12.1%	21.8%	27.0%	18.3%	7.1%	2.0%	0.6%	0.2%	0.0%	0.0%	0.0%	0.0%	0.0%	1310	1447	2614	3231	2188	851	239	73	18	3	2	0	0	0	11976	39
Total	10.2%	11.7%	22.1%	28.0%	18.8%	6.7%	1.9%	0.5%	0.1%	0.0%	0.0%	0.0%	0.0%	0.0%	4950	5707	10733	13608	9130	3269	916	238	62	19	4	1	0	0	48637	39

Speed Data Summary

Bin #	1	2	3	4	5	6	7	8	9	10	11	12	13	14	Total
Bin Speeds	0-30	30-35	35-40	40-45	45-50	50-55	55-60	60-65	65-70	70-75	75-80	80-90	90-100	100+	Total
Survey Total	4950	5707	10733	13608	9130	3269	916	238	62	19	4	1	0	0	48637
% Total	10.2%	11.7%	22.1%	28.0%	18.8%	6.7%	1.9%	0.5%	0.1%	0.0%	0.0%	0.0%	0.0%	0.0%	100%
Accumulated %	10.2%	21.9%	44.0%	72.0%	90.7%	97.5%	99.3%	99.8%	100.0%	100.0%	100.0%	100.0%	100.0%	100%	
Inverse Accum. %	89.8%	78.1%	56.0%	28.0%	9.3%	2.5%	0.7%	0.2%	0.0%	0.0%	0.0%	0.0%	0.0%	0.0%	
Average Speed	39 KM/H														



Site notes: Eastbound data bad after Oct 29 @ 12:30.

Royal Oak Dr between Pat Bay Hwy and Elk Lake Dr

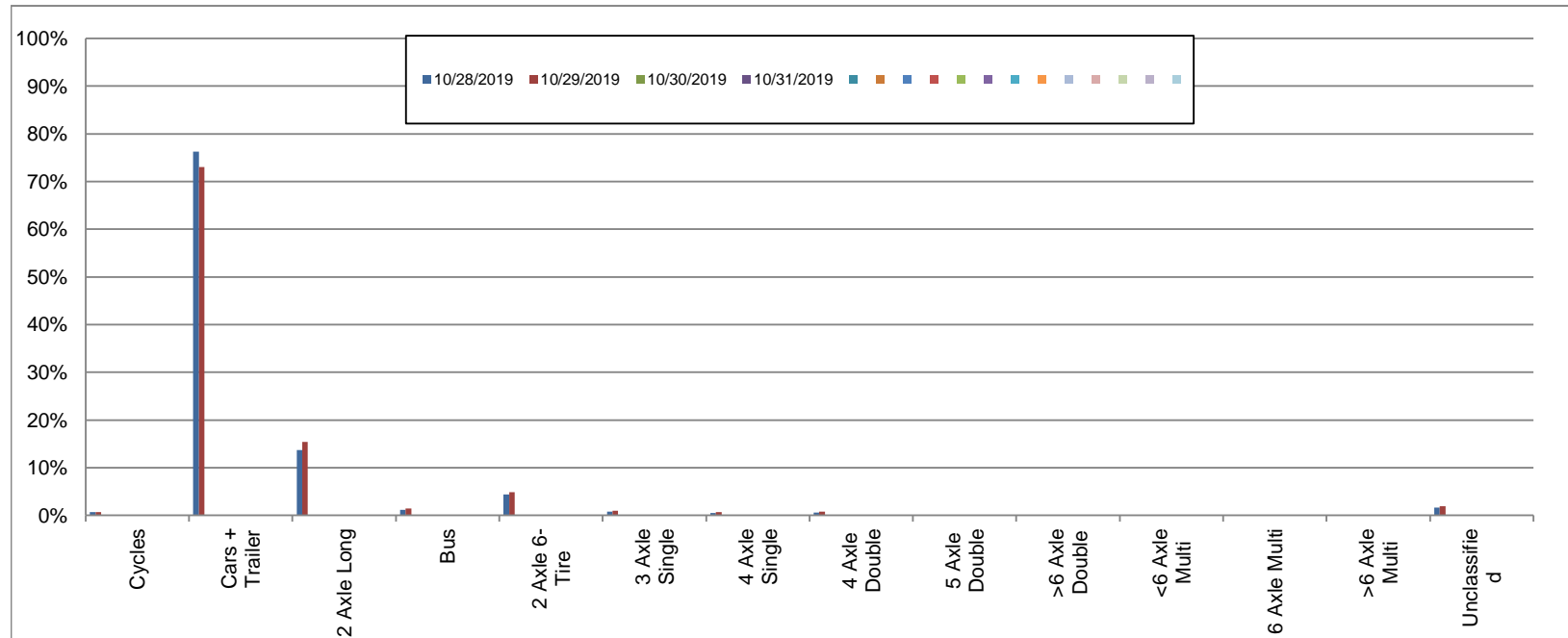
Westbound

October 28, 2019 to October 31, 2019

Daily Class Bin Percentages															Daily Class Bin Volumes														
Bin #	1	2	3	4	5	6	7	8	9	10	11	12	13	14	1	2	3	4	5	6	7	8	9	10	11	12	13	14	Total Volume
Bin Class	Cycles	Cars + Trailer	2 Axle Long	Bus	2 Axle 6-Tire	3 Axle Single	4 Axle Single	4 Axle Double	5 Axle Double	>6 Axle Double	<6 Axle Multi	6 Axle Multi	>6 Axle Multi	Unclassified	Cycles	Cars + Trailer	2 Axle Long	Bus	2 Axle 6-Tire	3 Axle Single	4 Axle Single	4 Axle Double	5 Axle Double	>6 Axle Double	<6 Axle Multi	6 Axle Multi	>6 Axle Multi	Unclassified	
10/28/2019	0.7%	76.3%	13.7%	1.2%	4.4%	0.8%	0.5%	0.6%	0.1%	0.1%	0.0%	0.0%	0.0%	1.6%	93	9865	1773	152	565	97	68	78	12	15	1	0	5	208	12932
10/29/2019	0.6%	73.0%	15.4%	1.4%	4.9%	1.0%	0.7%	0.8%	0.2%	0.1%	0.0%	0.0%	0.1%	1.9%	38	4281	902	83	285	59	40	46	9	6	0	0	3	110	5862
10/30/2019															0	0	0	0	0	0	0	0	0	0	0	0	0	0	0
10/31/2019															0	0	0	0	0	0	0	0	0	0	0	0	0	0	0
Total	0.7%	75.3%	14.2%	1.3%	4.5%	0.8%	0.6%	0.7%	0.1%	0.1%	0.0%	0.0%	0.0%	1.7%	131	14146	2675	235	850	156	108	124	21	21	1	0	8	318	18794

Class Data Summary

Bin #	1	2	3	4	5	6	7	8	9	10	11	12	13	14	Total Volume
Bin Class	Cycles	Cars + Trailer	2 Axle Long	Bus	2 Axle 6-Tire	3 Axle Single	4 Axle Single	4 Axle Double	5 Axle Double	>6 Axle Double	<6 Axle Multi	6 Axle Multi	>6 Axle Multi	Unclassified	Total Volume
Survey Total	131	14146	2675	235	850	156	108	124	21	21	1	0	8	318	18794
% Total	0.7%	75.3%	14.2%	1.3%	4.5%	0.8%	0.6%	0.7%	0.1%	0.1%	0.0%	0.0%	0.0%	1.7%	100%
Accumulated %	0.7%	76.0%	90.2%	91.4%	96.0%	96.8%	97.4%	98.0%	98.1%	98.3%	98.3%	98.3%	98.3%	100.0%	
Inv. Accum. %	99.3%	24.0%	9.8%	8.6%	4.0%	3.2%	2.6%	2.0%	1.9%	1.7%	1.7%	1.7%	1.7%	0.0%	



Classification Descriptions

Bin #	Bin Description
1	Motorcycles
2	Passenger cars, including those with recreational trailers
3	2-axle pick-ups, vans, and RVs, including those with recreational trailers
4	Buses
5	2-axle, 6-tire single units
6	3-axle single units
7	4-axle single units
8	3-axle or 4-axle double unit
9	5-axle double unit
10	6-, 7-, or 8-axle double unit
11	5-axle multiple unit
12	6-axle multiple unit
13	7-or-more-axle multiple unit
14	Vehicles that could not be classified

Site notes: Eastbound data bad after Oct 29 @ 12:30.

Royal Oak Dr between Pat Bay Hwy and Elk Lake Dr

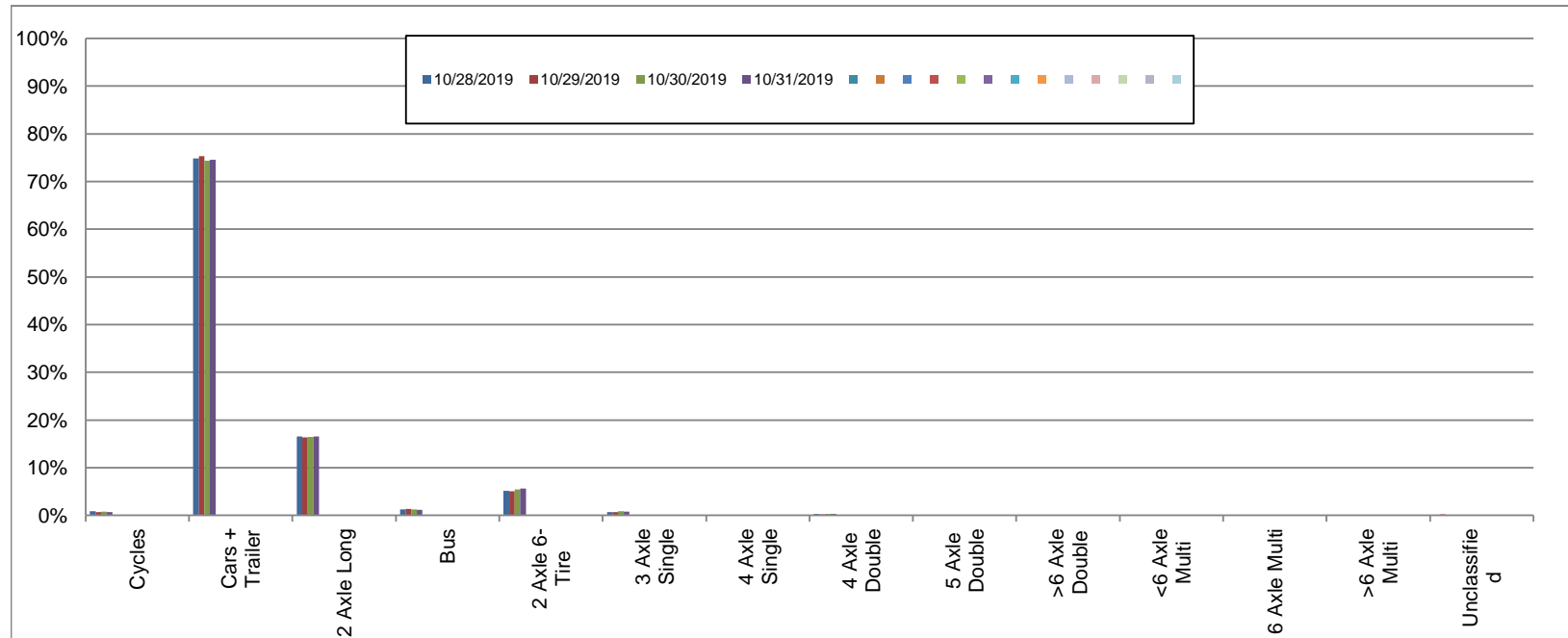
Eastbound

October 28, 2019 to October 31, 2019

Daily Class Bin Percentages															Daily Class Bin Volumes														
Bin #	1	2	3	4	5	6	7	8	9	10	11	12	13	14	1	2	3	4	5	6	7	8	9	10	11	12	13	14	Total Volume
Bin Class	Cycles	Cars + Trailer	2 Axle Long	Bus	2 Axle 6-Tire	3 Axle Single	4 Axle Single	4 Axle Double	5 Axle Double	>6 Axle Double	<6 Axle Multi	6 Axle Multi	>6 Axle Multi	Unclassified	Cycles	Cars + Trailer	2 Axle Long	Bus	2 Axle 6-Tire	3 Axle Single	4 Axle Single	4 Axle Double	5 Axle Double	>6 Axle Double	<6 Axle Multi	6 Axle Multi	>6 Axle Multi	Unclassified	
10/28/2019	0.9%	74.8%	16.5%	1.2%	5.1%	0.7%	0.1%	0.3%	0.1%	0.0%	0.0%	0.0%	0.0%	0.1%	106	8821	1950	147	606	84	6	41	7	4	0	0	4	10	11786
10/29/2019	0.7%	75.3%	16.3%	1.3%	5.1%	0.6%	0.0%	0.2%	0.1%	0.0%	0.0%	0.0%	0.0%	0.2%	89	9273	2010	163	627	80	6	23	9	4	0	0	5	20	12309
10/30/2019	0.8%	74.4%	16.5%	1.3%	5.5%	0.8%	0.0%	0.3%	0.1%	0.1%	0.0%	0.0%	0.0%	0.2%	98	9346	2072	161	688	106	6	41	15	11	0	0	3	19	12566
10/31/2019	0.7%	74.6%	16.5%	1.2%	5.6%	0.8%	0.0%	0.3%	0.1%	0.1%	0.0%	0.0%	0.0%	0.1%	82	8930	1978	142	670	93	4	37	13	7	0	0	3	17	11976
Total	0.8%	74.8%	16.5%	1.3%	5.3%	0.7%	0.0%	0.3%	0.1%	0.1%	0.0%	0.0%	0.0%	0.1%	375	36370	8010	613	2591	363	22	142	44	26	0	0	15	66	48637

Class Data Summary

Bin #	1	2	3	4	5	6	7	8	9	10	11	12	13	14	Total Volume
Bin Class	Cycles	Cars + Trailer	2 Axle Long	Bus	2 Axle 6-Tire	3 Axle Single	4 Axle Single	4 Axle Double	5 Axle Double	>6 Axle Double	<6 Axle Multi	6 Axle Multi	>6 Axle Multi	Unclassified	Total Volume
Survey Total	375	36370	8010	613	2591	363	22	142	44	26	0	0	15	66	48637
% Total	0.8%	74.8%	16.5%	1.3%	5.3%	0.7%	0.0%	0.3%	0.1%	0.1%	0.0%	0.0%	0.0%	0.1%	100%
Accumulated %	0.8%	75.5%	92.0%	93.3%	98.6%	99.4%	99.4%	99.7%	99.8%	99.8%	99.8%	99.8%	99.9%	100.0%	
Inv. Accum. %	99.2%	24.5%	8.0%	6.7%	1.4%	0.6%	0.6%	0.3%	0.2%	0.2%	0.2%	0.2%	0.1%	0.0%	



Classification Descriptions

Bin #	Bin Description
1	Motorcycles
2	Passenger cars, including those with recreational trailers
3	2-axle pick-ups, vans, and RVs, including those with recreational trailers
4	Buses
5	2-axle, 6-tire single units
6	3-axle single units
7	4-axle single units
8	3-axle or 4-axle double unit
9	5-axle double unit
10	6-, 7-, or 8-axle double unit
11	5-axle multiple unit
12	6-axle multiple unit
13	7-or-more-axle multiple unit
14	Vehicles that could not be classified

Site notes: Eastbound data bad after Oct 29 @ 12:30.